

LANNEN  
CONSTRUCTION INC.

# INTERIOR DESIGN<sup>®</sup>

NUMBER 7



the buzz about office

\$8.95US \$10.95CAN

05>



0 09281 01016 6

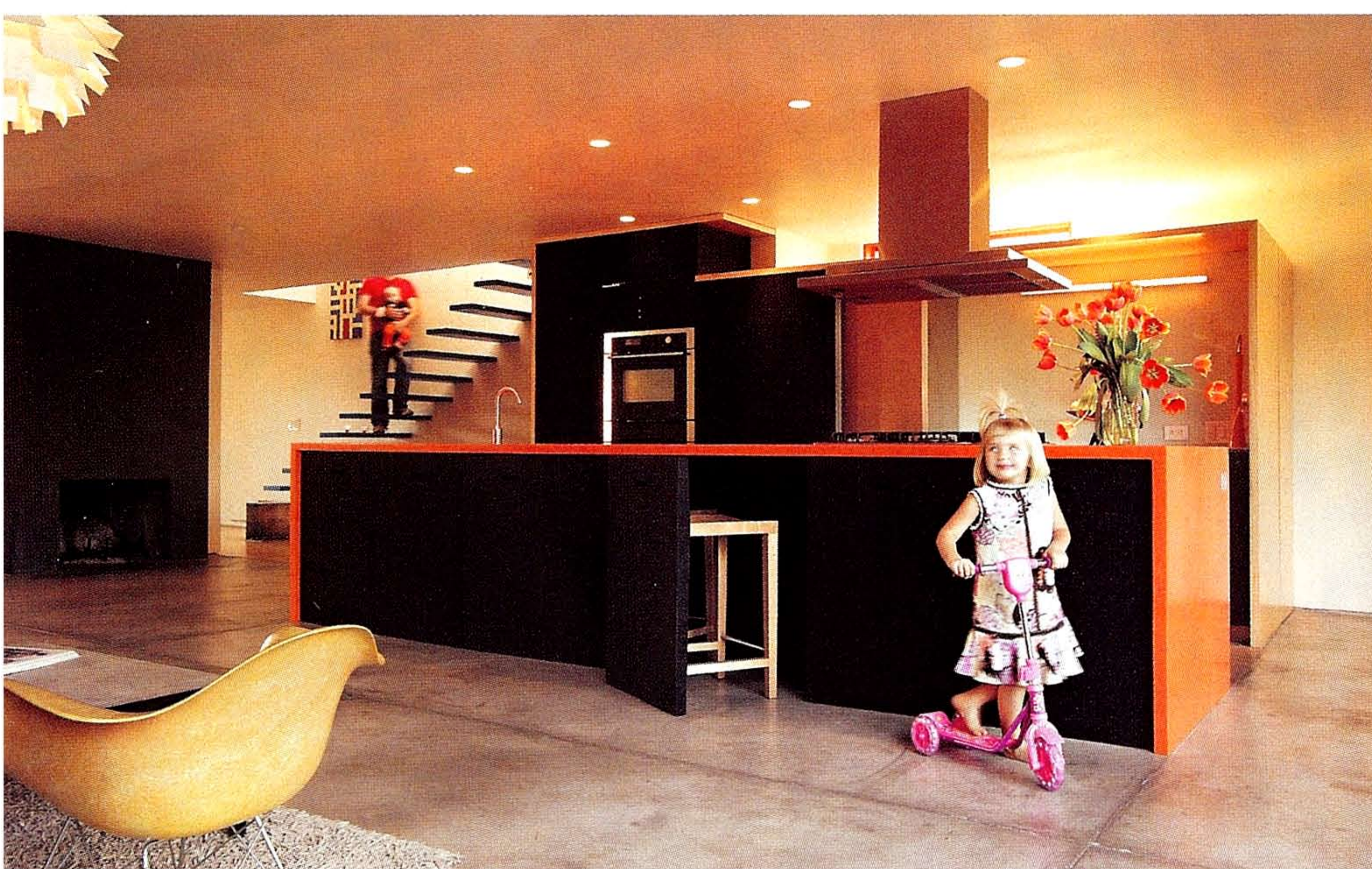
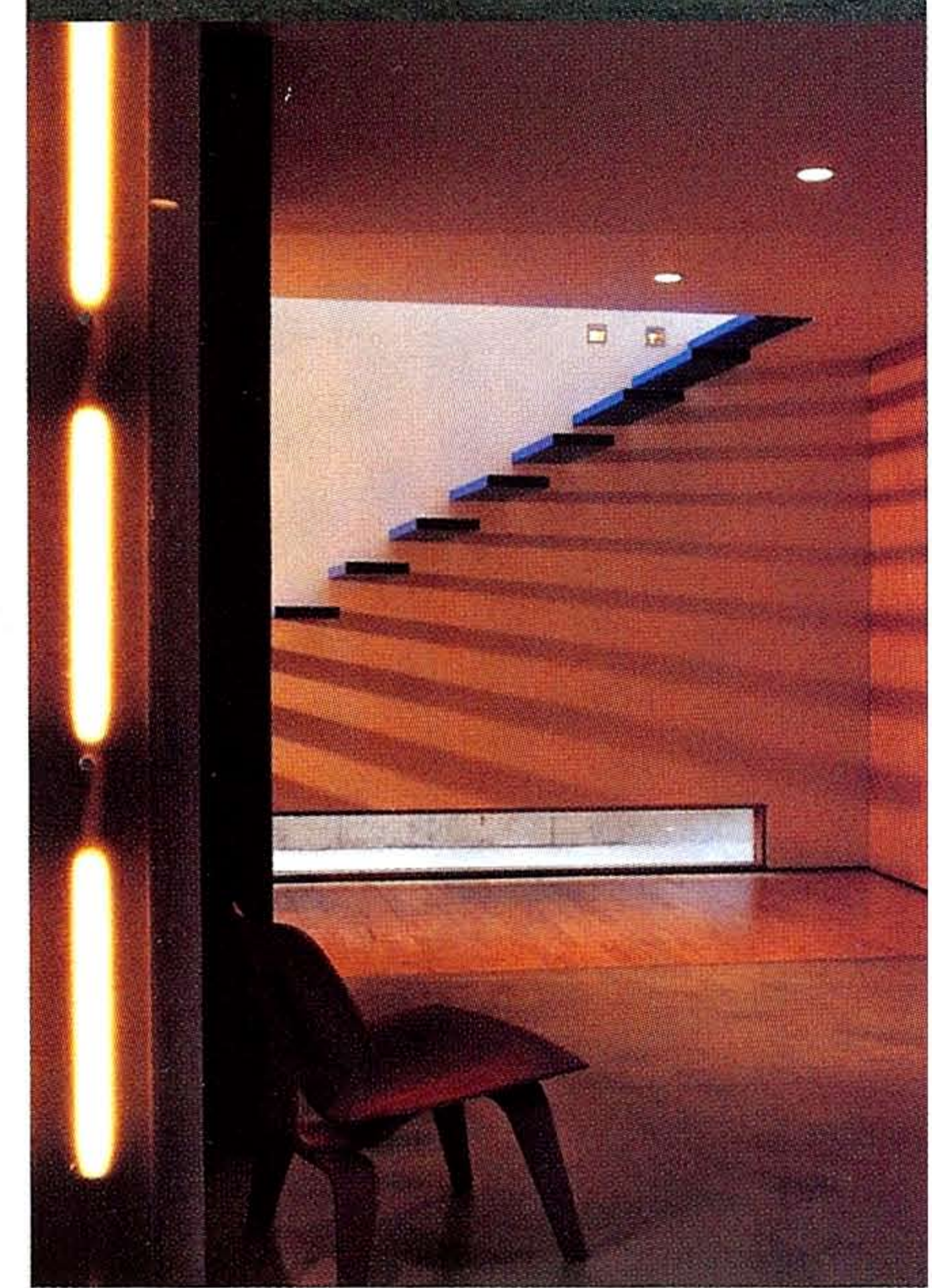
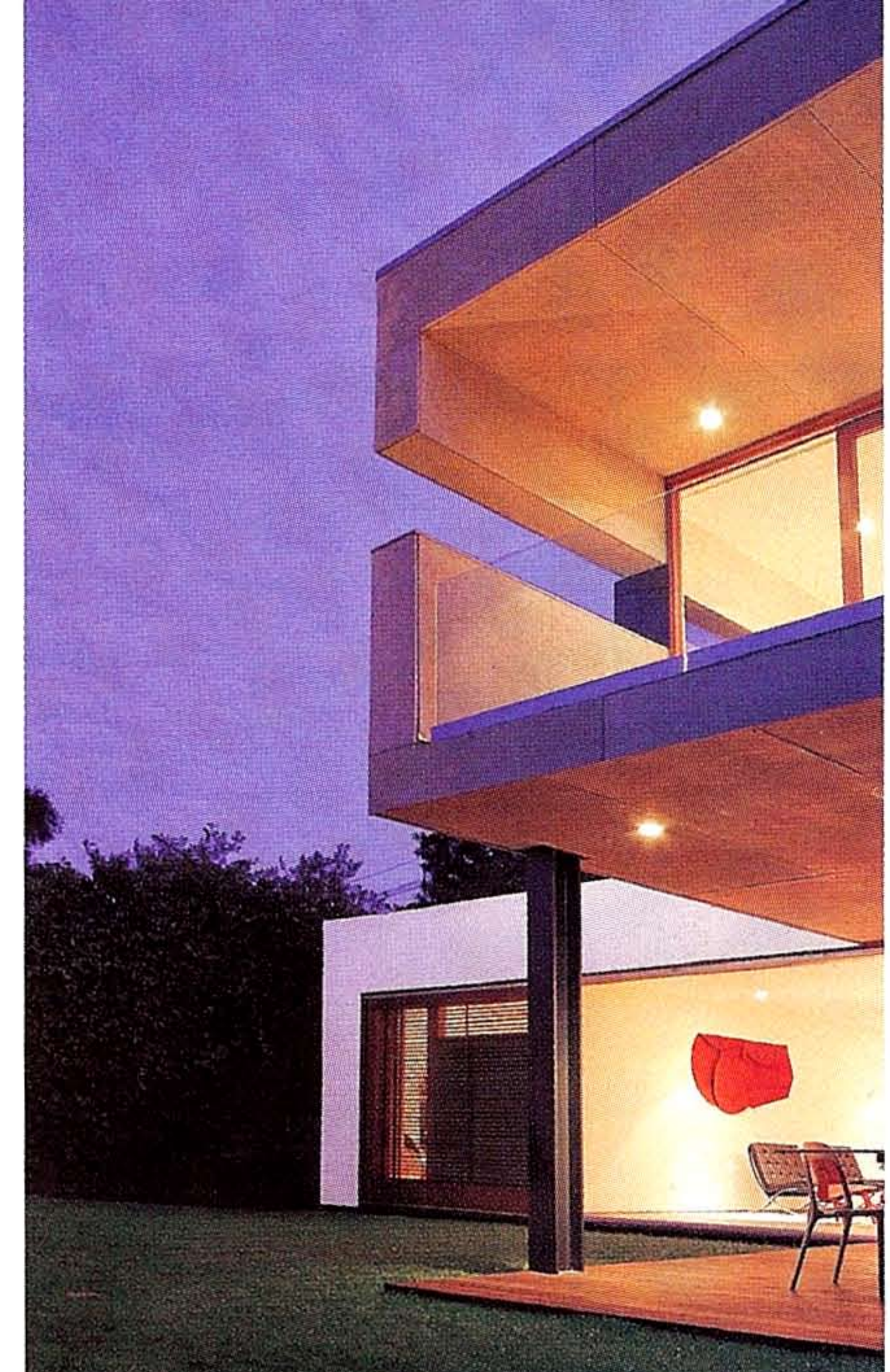
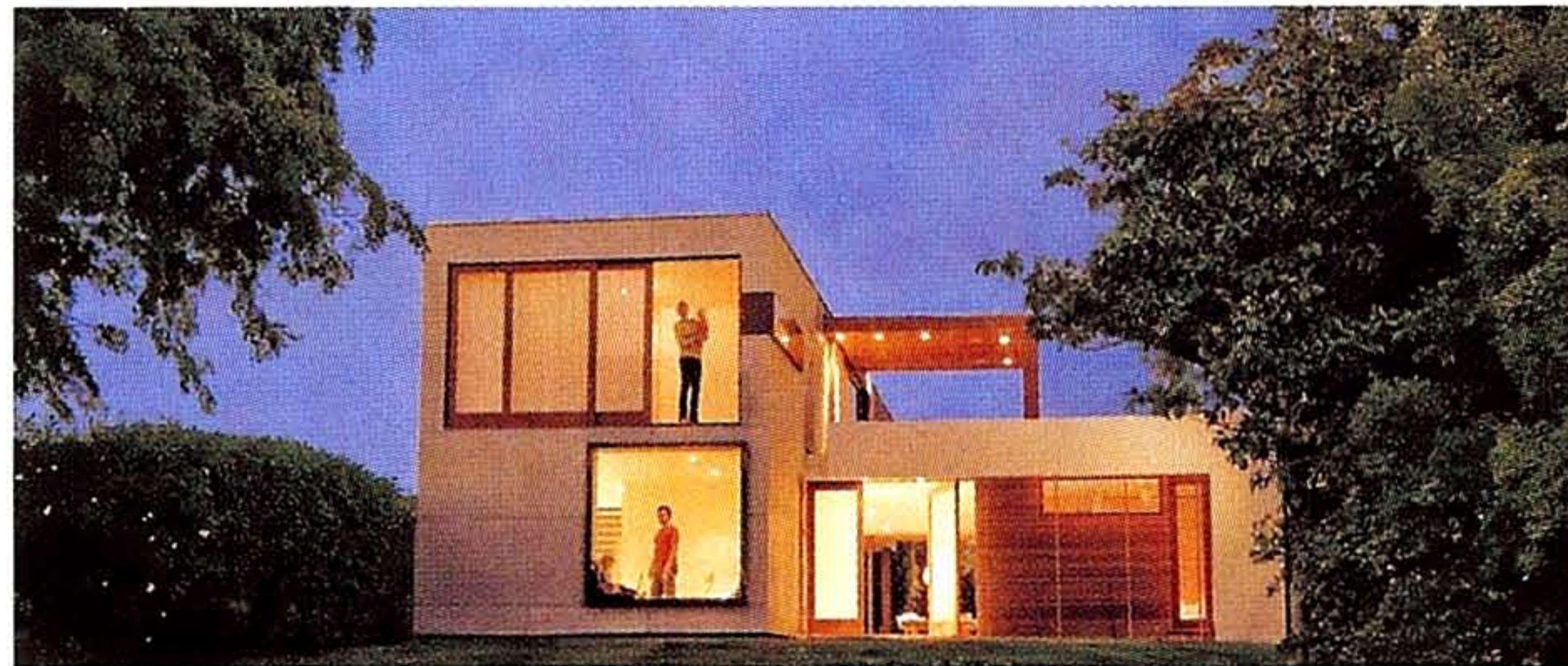


## living large(r)

ACHIEVING TRUE INDOOR-OUTDOOR LIVING, THE 2,200-SQUARE-FOOT LOS ANGELES home of **Minarc's** husband-wife principals underwent a renovation that not only looks good but also *does* good where the environment is concerned. Trygvi Thorsteinsson and Erla Dögg Ingjaldsdóttir reasoned that ridding their house of chemicals, carpet, and tile would also simplify the design process. Drywall remains exposed; new windows maximize natural light, cutting down on electricity use. Bathroom sinks are made from recycled silicone rubber, kitchen cabinetry from recycled tires. "The materials flow together," Thorsteinsson says. →

*Off the master suite of their house in Los Angeles, the couple built an ipé sleeping platform; the surrounding stones, warmed by the sun, serve as a reflexology walking ground.*

*Clockwise from top left: Concrete and stucco define the exterior. A steel I beam supports a balcony. Steps made of recycled rubber rise beyond the kitchen. The dining patio is heated. The couple's daughter plays between the kitchen's Corian-wrapped island and the living area.*



Just about everything serves dual purposes. The master bedroom's headboard conceals storage for clothing. In the family room, cushions turn a steel sill into a window seat. Doors in the base of the kitchen island open to store stools.

Wellness was another important factor in the redesign. To promote "outside" time, the couple built a heated dining patio off the kitchen and a partially covered *ipé* deck off the master suite. Surrounding that deck is a bed of pebbles. Warmed by the sun, they become a reflexology walking ground.

—Sheila Kim-Jamet

RECESSED FIXTURES (EXTERIOR): HUNZA PRODUCTION. ISLAND SURFACING (KITCHEN): DuPONT. CABINETRY MATERIAL: RUBBER-CAL. CABINET HARDWARE: FSB. HOOD, OVEN: SIEMENS. SINK FITTINGS: KWC. WINDOWS: FIVE STAR WINDOWS. STRUCTURAL ENGINEER: HUFF ENGINEERING. GENERAL CONTRACTOR: LANNEN CONSTRUCTION.

